



The RSC Ensemble is generously supported by  
THE GATSBY CHARITABLE FOUNDATION  
and THE KOVNER FOUNDATION

STRAFORD-UPON-AVON  
**FEBRUARY**  
**SEPTEMBER**

**2010**

**WWW.RSC.ORG.UK 0844 800 1110**

accenture

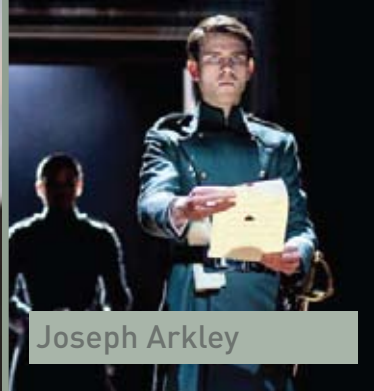
TICKETS  
FROM **£12**



Supported by  
**ARTS COUNCIL  
ENGLAND**



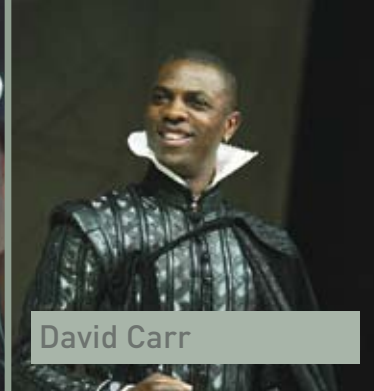
Charles Aitken



Joseph Arkley



Adam Burton



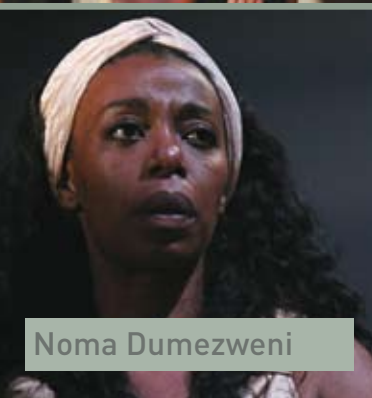
David Carr



Brian Doherty



Darrell D'Silva



Noma Dumezweni



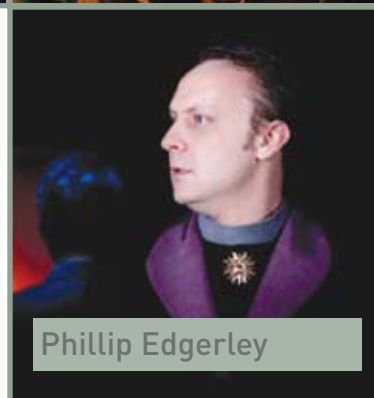
Dyfan Dwyfor

This is where the company's work really begins to cook. By the time we return to Stratford in 2010 these actors will have been working together for over a year, and equipped to bring you a rich repertoire of eight Shakespeare productions as well as our new dramatisation of *Morte D'Arthur*, directed by Gregory Doran.

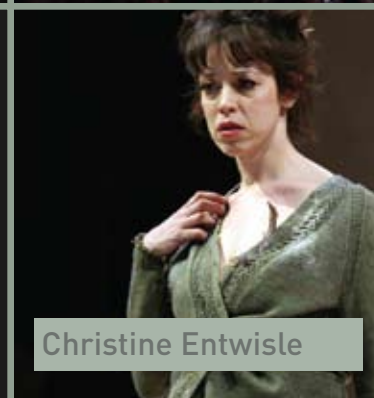
As last year's work grows and deepens with the investment of time, so new productions arrive from our exciting new Associate Directors David Farr and Rupert Goold, who open the season with *King Lear* and *Romeo and Juliet*. Later, our new Artistic Associate Kathryn Hunter plays her first Shakespearean title role with the RSC in my production of *Antony and Cleopatra*, and we follow the success of our Young People's *The Comedy of Errors* with a *Hamlet* conceived and directed by our award winning playwright in residence, Tarell Alvin McCraney.

I hope that you will come and see our work as we continue to explore just how potent a long term community of wonderfully talented artists can be.

Michael Boyd  
Artistic Director



Phillip Edgerley



Christine Entwisle



Geoffrey Freshwater



James Gale



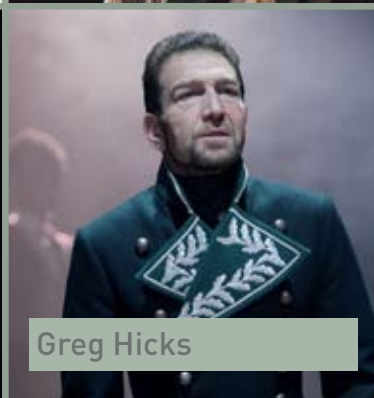
Mariah Gale



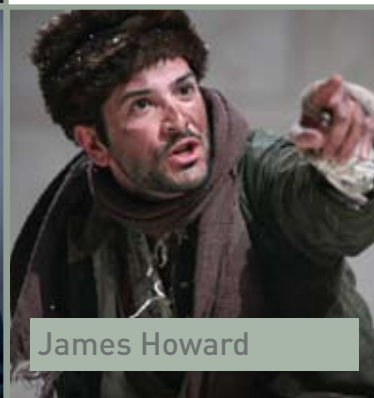
Gruffudd Glyn



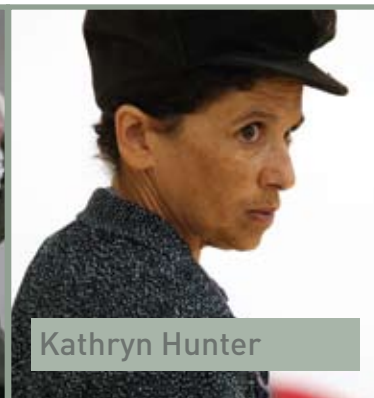
Paul Hamilton



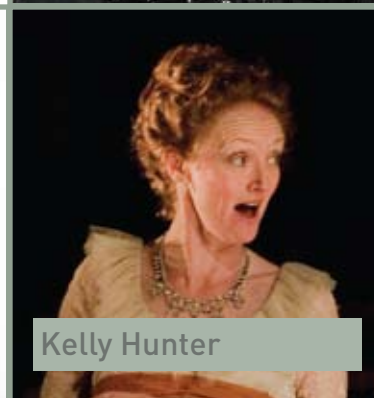
Greg Hicks



James Howard



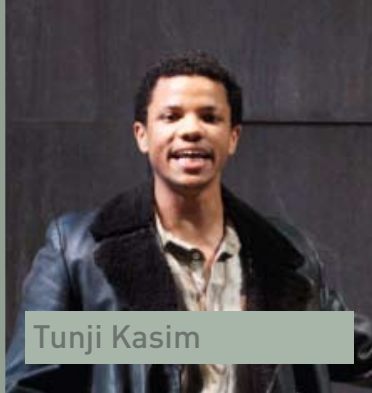
Kathryn Hunter



Kelly Hunter



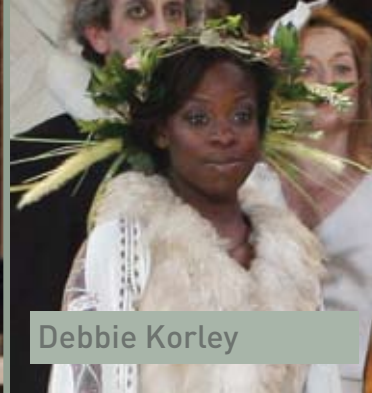
Ansu Kabia



Tunji Kasim



Richard Katz



Debbie Korley



John Mackay



Forbes Masson



Sandy Neilson



Jonjo O'Neill



Dharmesh Patel



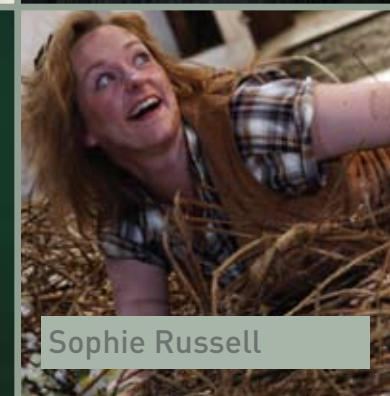
Peter Peverley



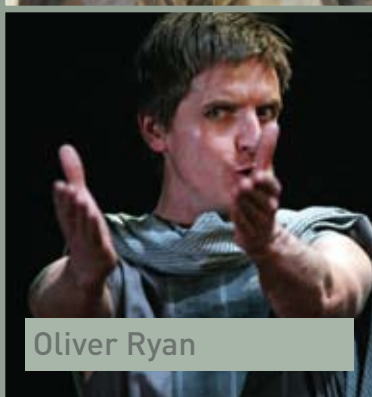
Patrick Romer



David Rubin



Sophie Russell



Oliver Ryan



Simone Saunders



Peter Shorey



Clarence Smith



Katy Stephens



James Traherne



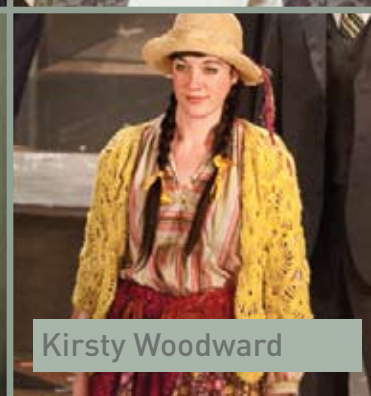
Sam Troughton



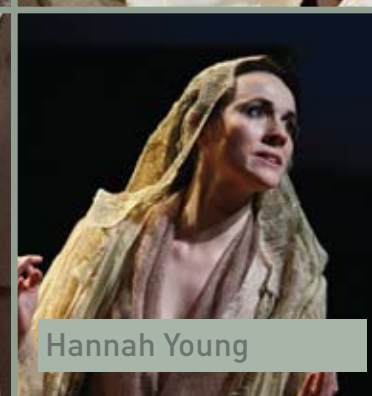
James Tucker



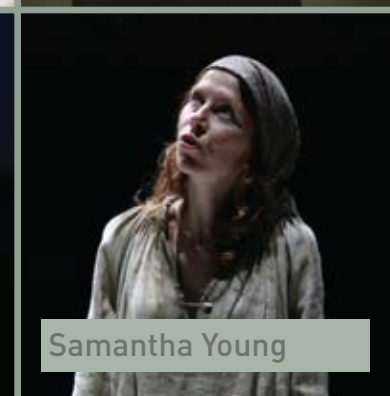
Larrington Walker



Kirsty Woodward



Hannah Young

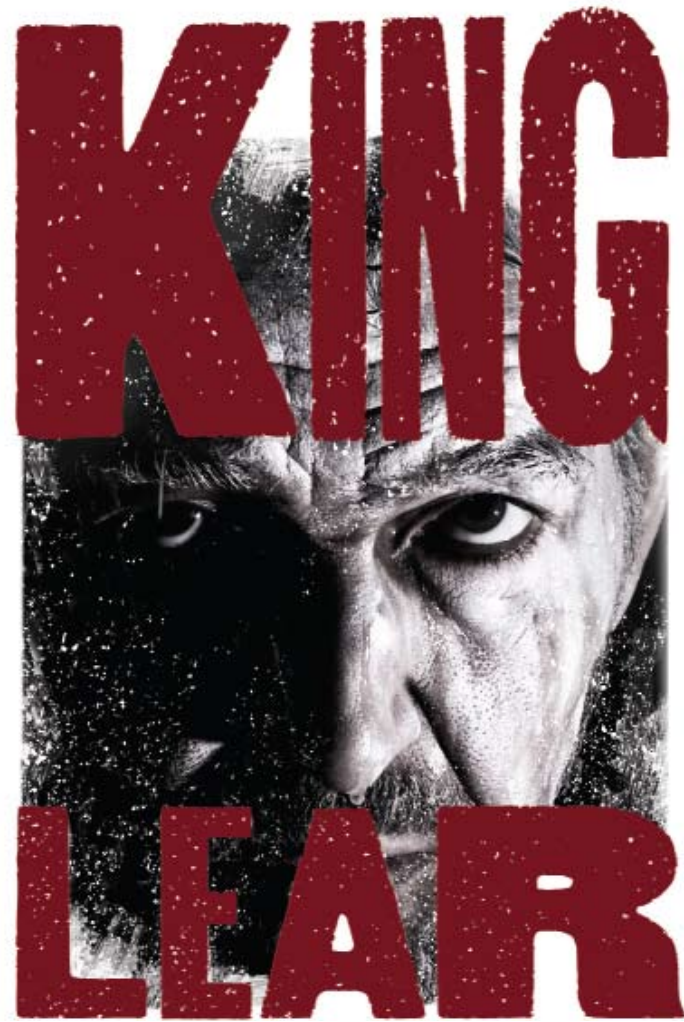


Samantha Young

# TOPPLED BY PRIDE AND STRIPPED OF ALL STATUS,

King Lear heads into the wilderness with a fool and a madman for company. Shakespeare's great tragedy peels away the trappings of society to reveal the unforgiving truth of the human condition. After their acclaimed collaboration on *The Winter's Tale*, David Farr once again directs the Ensemble. Greg Hicks takes the title role with Kathryn Hunter playing the Fool.

Plays in repertoire from 18 February to 26 August 2010



WILLIAM SHAKESPEARE

Mon 1 March  
**DIRECTOR TALK**  
Director David Farr in conversation, discussing the creative choices made in this production of *King Lear*.  
The Courtyard Theatre  
5.15-6pm, £5

Thu 1 April  
**POST SHOW TALK BACK**  
Stay on after the show and put your questions about the production to members of the Acting Ensemble.  
Free

Sat 19 June  
**SHAKESPEARE UNWRAPPED**  
Join members of the Creative Team and Acting Ensemble as they demonstrate some of the skills that go into making the production.  
The Courtyard Theatre  
10-11am, £5

**ACCESS PERFORMANCES**  
Audio Described Performances  
Sat 5 June (matinee) & Touch Tour 11.15am  
Sat 19 June (matinee) & Touch Tour 11.15am  
Captioned Performance  
Fri 4 June

**TEACHERS AND STUDENTS**  
Develop your students' understanding and enjoyment of the play through **production-specific workshops and onstage events**, alongside **online resources**. See page 10.  
[www.rsc.org.uk/education](http://www.rsc.org.uk/education)

**ENSEMBLE** CHARLES AITKEN ADAM BURTON BRIAN DOHERTY DARRELL D'SILVA PHILLIP EDGERLEY GEOFFREY FRESHWATER JAMES GALE PAUL HAMILTON GREG HICKS KATHRYN HUNTER KELLY HUNTER ANSU KABIA TUNJI KASIM JOHN MACKAY SANDY NEILSON SOPHIE RUSSELL PETER SHOREY CLARENCE SMITH KATY STEPHENS JAMES TUCKER LARRINGTON WALKER HANNAH YOUNG SAMANTHA YOUNG

**DIRECTOR** DAVID FARR  
**DESIGNER** JON BAUSOR  
**LIGHTING** JON CLARK  
**MUSIC** KEITH CLOUSTON  
**SOUND** CHRISTOPHER SHUTT  
**MOVEMENT** ANN YEE  
**FIGHTS** KATE WATERS

# IN THE INSTANT OF A CHANCE MEETING TWO YOUNG PEOPLE FALL IN LOVE.

Impulsively they marry in secret, but in a divided city their innocent union is threatened by a bloody family feud.

Shakespeare vividly captures the beauty, intimacy and ultimate fragility of young love in a hostile world.

Rupert Goold returns to the company to direct his first production as an Associate Director following his acclaimed 2006 production of *The Tempest*. Rupert's recent credits include *Oliver!* and *Enron*. Sam Troughton and Mariah Gale play Romeo and Juliet.

Plays in repertoire from 12 March to 27 August 2010



## Wed 17 March DIRECTOR TALK

Director Rupert Goold in conversation, discussing the creative choices made in this production of *Romeo and Juliet*.  
The Courtyard Theatre  
5.15–6pm. £5

## Thu 13 May POST SHOW TALK BACK

Stay on after the show and put your questions about the production to members of the Acting Ensemble.  
Free

## Sat 29 May FAMILY DAY

Join members of the Acting Ensemble and Creative Team to explore the play including an opportunity to take part.  
The Courtyard Theatre  
10–11am. £4 per adult  
£2 per child plus matinee ticket

## Sat 3 July SHAKESPEARE UNWRAPPED

Join members of the Creative Team and Acting Ensemble as they demonstrate some of the skills that go into making the production.  
The Courtyard Theatre  
10–11am, £5

## ACCESS PERFORMANCES

Audio Described  
Performances  
Fri 28 May  
& Touch Tour 5.30pm  
Sat 3 July (matinee)  
& Touch Tour 11.15am  
Captioned Performance  
Thu 29 April (evening)

## WILLIAM SHAKESPEARE

**ENSEMBLE** JOSEPH ARKLEY DAVID CARR NOMA DUMEZWENI DYFAN DWYFOR  
CHRISTINE ENTWISLE MARIAH GALE GRUFFUDD GLYN JAMES HOWARD RICHARD KATZ  
DEBBIE KORLEY FORBES MASSON JONJO O'NEILL DHARMESH PATEL PETER PEVERLEY  
PATRICK ROMER DAVID RUBIN OLIVER RYAN SIMONE SAUNDERS JAMES TRAHERNE  
SAM TROUGHTON KIRSTY WOODWARD

**DIRECTOR** RUPERT GOOLD  
**DESIGNER** TOM SCUTT  
**LIGHTING** HOWARD HARRISON  
**MUSIC AND SOUND** ADAM CORK  
**FIGHTS** TERRY KING



# ANTONY AND CLEOPATRA

WILLIAM SHAKESPEARE

**ENSEMBLE** CHARLES AITKEN ADAM BURTON BRIAN DOHERTY DARRELL D'SILVA  
PHILLIP EDGERLEY GEOFFREY FRESHWATER JAMES GALE PAUL HAMILTON  
GREG HICKS KATHRYN HUNTER ANSU KABIA TUNJI KASIM JOHN MACKAY  
SANDY NEILSON SOPHIE RUSSELL PETER SHOREY CLARENCE SMITH KATY STEPHENS  
JAMES TUCKER LARRINGTON WALKER HANNAH YOUNG SAMANTHA YOUNG

**DIRECTOR** MICHAEL BOYD  
**DESIGNER** TOM PIPER  
**LIGHTING** WOLFGANG GÖBBEL  
**MOVEMENT** ANNA MORRISSEY

Mon 19 April  
**DIRECTOR TALK**  
RSC Artistic Director  
Michael Boyd in  
conversation, discussing the  
creative choices made in  
this production of  
*Antony and Cleopatra*.  
The Courtyard Theatre  
5.15–6pm, £5

Sat 22 May  
**SHAKESPEARE  
UNWRAPPED**  
Join members of the Creative  
Team and Acting Ensemble  
as they demonstrate some of  
the skills that go into making  
the production.  
The Courtyard Theatre  
10–11am, £5

Thu 27 May  
**POST SHOW  
TALK BACK**  
Stay on after the show and  
put your questions about the  
production to members of  
the Acting Ensemble.  
Free

**ACCESS PERFORMANCES**  
Audio Described  
Performances  
Sat 26 June (matinee)  
& Touch Tour 11.15am  
Wed 25 Aug  
& Touch Tour 5.30pm  
Captioned Performance  
Tue 11 May

**TEACHERS AND STUDENTS**  
Develop your students'  
understanding and enjoyment  
of the play through  
**production-specific**  
workshops and onstage  
events, alongside **online**  
resources. See page 10.  
[www.rsc.org.uk/education](http://www.rsc.org.uk/education)

## TWO CHARISMATIC AND POWERFUL LEADERS FIND IN EACH OTHER AN IRRESISTIBLE AND YET UNATTAINABLE EQUAL.

Caught between desire and duty their affair will shake the foundations of the known world. Power politics and passion collide in Shakespeare's captivating tragedy.

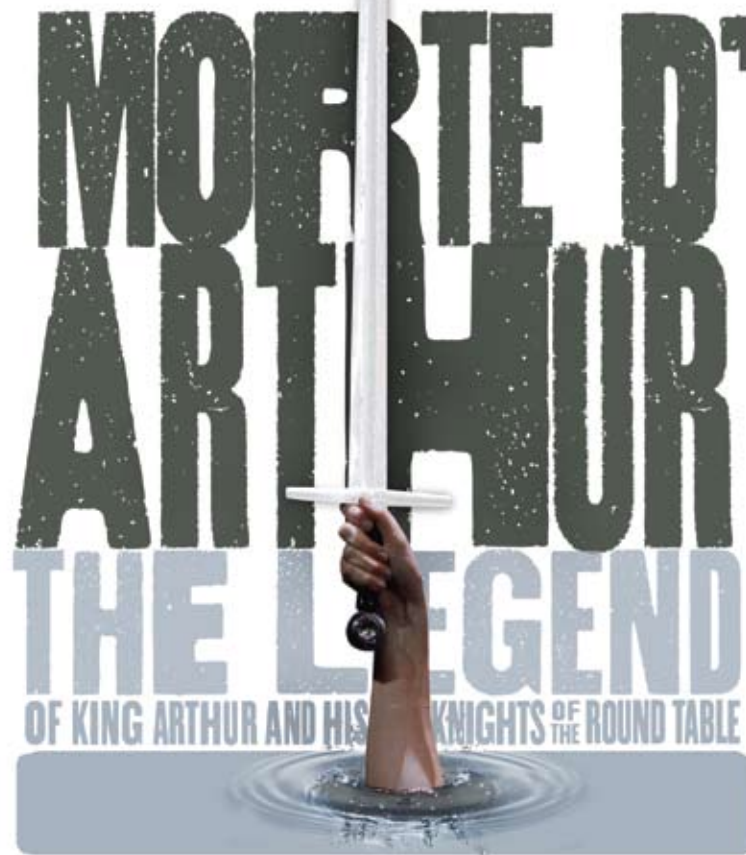
RSC Artistic Director Michael Boyd directs Darrell D'Silva and Kathryn Hunter in the title roles.

Plays in repertoire from 10 April to 28 August 2010

# THOMAS MALORY'S MORTE D'ARTHUR TELLS 'OF THE MATTER OF ENGLAND.'

Written during the violent years of the Wars of the Roses, it reflects its time. The story of King Arthur's attempt to unite his country blends myth and magic, from the sword in the stone to the establishment of the Round Table and the quest for the Holy Grail. It traces the adultery of Lancelot and Guinevere and ultimately the death of the 'once and future king'. An often surprising and unexpected version of the familiar story, *Morte D'Arthur* is the first great telling of the cycle in the English language. Mike Poulton's new version workshopped and developed by the Ensemble under the direction of Chief Associate Director Gregory Doran, brings the story to the RSC stage for the first time. Gregory's most recent productions include *Love's Labour's Lost* and *Hamlet*, which he has also directed for film to be broadcast on the BBC. His production of *Twelfth Night* transfers to London in December having opened at The Courtyard Theatre in October 2009. Mike Poulton's last work for the RSC was his hugely popular 2005 adaptation of *The Canterbury Tales*.

Plays in repertoire from 11 June to 28 August 2010



Wed 16 June  
**DIRECTOR TALK**  
Director Gregory Doran in conversation, discussing the creative choices made in this production of *Morte D'Arthur*.  
The Courtyard Theatre  
5.15–6pm. £5

Sat 26 June  
**POST SHOW TALK BACK**  
Stay on after the show and put your questions about the production to members of the Acting Ensemble.  
Free

Sun 27 June  
**SUNDAY BRUNCH AUTHOURING ARTHUR**  
Join a round table discussion looking at how the tales of King Arthur have been interpreted and reinvented through the ages by artists and writers. The Courtyard Theatre. Brunch served from 11.30am, debate 1–2pm. £15 including Brunch

Sat 10 July  
**UNWRAPPED**  
Join members of the Creative Team and Acting Ensemble as they demonstrate some of the skills that go into making the production.  
The Courtyard Theatre  
10–11am. £5

**ACCESS PERFORMANCES**  
Audio Described Performance  
Fri 9 July  
& Touch Tour 5.30  
Captioned Performance  
Sat 10 July (matinee)

**SIR THOMAS MALORY IN A NEW ADAPTATION BY MIKE POULTON** A NEW RSC COMMISSION

**ENSEMBLE** JOSEPH ARKLEY DAVID CARR NOMA DUMEZWENI DYFAN DWYFOR CHRISTINE ENTWISLE MARIAH GALE GRUFFUDD GLYN JAMES HOWARD RICHARD KATZ DEBBIE KORLEY FORBES MASSON JONJO O'NEILL DHARMESH PATEL PETER PEVERLEY PATRICK ROMER DAVID RUBIN OLIVER RYAN SIMONE SAUNDERS JAMES TRAHERNE SAM TROUGHTON KIRSTY WOODWARD

**DIRECTOR** GREGORY DORAN  
**DESIGNER** KATRINA LINDSAY  
**LIGHTING** TIM MITCHELL  
**MOVEMENT** STRUAN LESLIE

The RSC Literary Department is generously supported by THE DRUE HEINZ TRUST

# RETURNING TO THE REPERTOIRE FROM 14 JULY

PRODUCTIONS FROM YEAR ONE OF THE ENSEMBLE RETURN FOR A LIMITED NUMBER OF PERFORMANCES



'David Farr's magical production... magnificent ensemble acting'

GUARDIAN

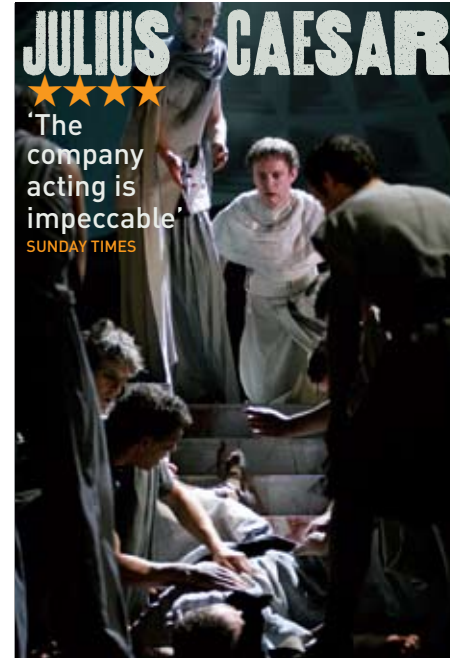
Plays in repertoire from  
14 July to 2 September 2010



'Michael Boyd's actors go for the heart of this serious, beautiful comedy'

SUNDAY TIMES

Plays in repertoire from  
21 July to 4 September 2010



'Lucy Bailey's innovative take on the classic is a breath of fresh air'

INDEPENDENT

Plays in repertoire from  
28 July to 4 September 2010

**PUBLIC UNDERSTUDY PERFORMANCES** The RSC operates a full understudy system, which allows you to see the leading actors of tomorrow as they perform some of Shakespeare's most challenging roles. £2.50 RSC Members, £5 Non-Members

ROMEO AND JULIET TUE 30 MARCH 1PM    KING LEAR TUE 4 MAY 1PM    ANTONY AND CLEOPATRA TUE 18 MAY 1PM

## TEACHERS AND STUDENTS

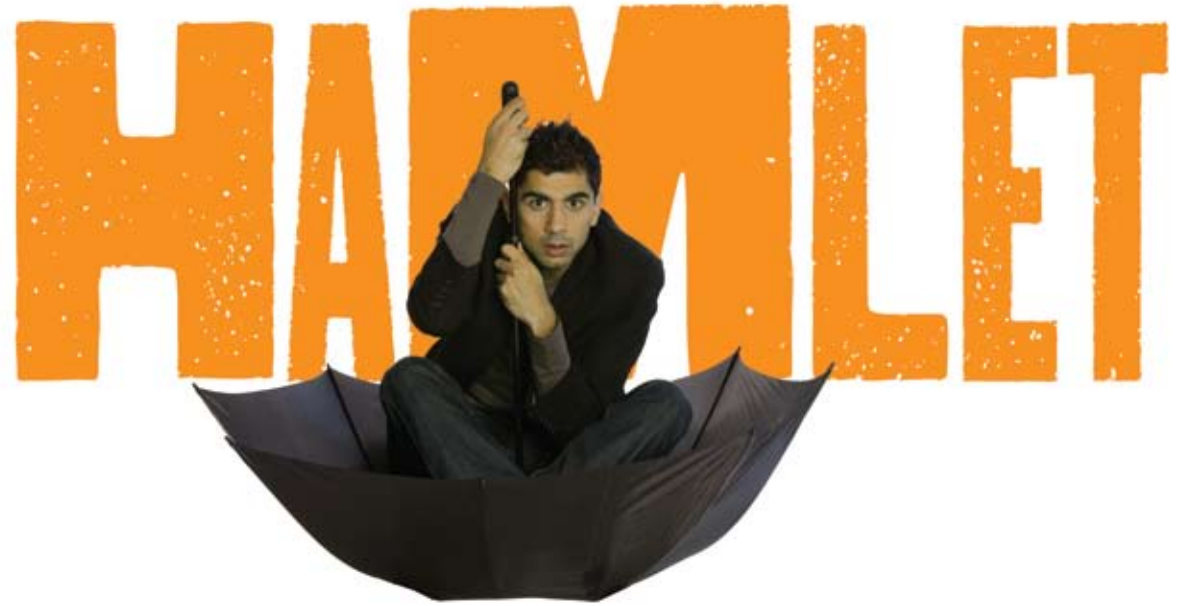
Develop your students' understanding and enjoyment of the play through production-specific workshops and onstage events, alongside online resources. See page 10. [www.rsc.org.uk/education](http://www.rsc.org.uk/education)

# YOUNG PEOPLE'S SHAKESPEARE PRODUCTIONS

## HAMLET IS A YOUNG MAN ON THE EDGE.

His father's death was suspicious and his mother has hastily married his uncle, the man he suspects of murdering his father. Trapped in the claustrophobic court of Elsinore he must discover the truth and decide if he has a right to avenge his father.

RSC/CAPITAL International Playwright in Residence Tarell Alvin McCraney directs a new version of *Hamlet*, with members of the current Ensemble. Edited by Tarell and Bijan Sheibani specifically for younger audiences, the production follows the success of Young People's Shakespeare *The Comedy of Errors* in 2009. *Hamlet* will tour to schools in London in early 2010 before joining the repertoire in The Courtyard Theatre from 1 May.



**WILLIAM SHAKESPEARE**

**EDITED BY TARELL ALVIN McCRANEY AND BIJAN SHEIBANI**

**ENSEMBLE** DYFAN DWYFOR GRUFFUDD GLYN  
DEBBIE KORLEY DHARMESH PATEL PETER PEVERLEY  
PATRICK ROMER DAVID RUBIN SIMONE SAUNDERS  
KIRSTY WOODWARD

**DIRECTOR** TARELL ALVIN McCRANEY  
**DESIGNER** TOM PIPER  
**ASSOCIATE DIRECTOR** MICHAEL FENTIMAN  
**ASSOCIATE DESIGNER** JEAN CHAN

RETURNING TO THE REPERTOIRE FROM 7 AUGUST



## WHEN TWO SETS OF IDENTICAL TWINS WITH IDENTICAL NAMES ARE SHIPWRECKED AS INFANTS

their father can save only one of each set.

Years later, one Antipholus and one Dromio arrive in Ephesus only to find that everyone there seems a little odd...

In association with acclaimed theatre company Told by an Idiot, and directed by Paul Hunter, *The Comedy of Errors* returns for a limited number of performances.

'I doubt that you could see it without feeling Shakespeare is your contemporary, whether you are 9 or 99' GUARDIAN

**WILLIAM SHAKESPEARE** EDITED BY GARY OWEN *Told by an Idiot*

**STAND UP FOR SHAKESPEARE WEEK 8 – 11 September 2010** Inspired by our Stand up for Shakespeare campaign, for the final week of the 2010 Summer season we will open the doors of The Courtyard Theatre for four days of performances and activity specifically for schools, young people and families. Our hugely successful Young People's Shakespeare *The Comedy of Errors* is revived and plays in repertoire with a new young people's *Hamlet* alongside talks, workshops and events for all ages - visit [www.rsc.org.uk](http://www.rsc.org.uk) for updates.

**DIRECTOR** PAUL HUNTER  
**DESIGNER** MICHAEL VALE  
**MUSIC** IAIN JOHNSTONE  
**ASSOCIATE DIRECTOR** HAYLEY CARMICHAEL

**TEACHERS AND STUDENTS**  
Develop your students' understanding and enjoyment of the play through production-specific workshops and onstage events, alongside online resources. See page 10.  
[www.rsc.org.uk/education](http://www.rsc.org.uk/education)



# EDUCATION

To book all education activities for students and teachers, please call the Education Ticket Hotline on 0844 800 1113. This line is answered by a specialist Education team available from 9.30am – 5pm, Monday to Friday during term time. [education@rsc.org.uk](mailto:education@rsc.org.uk) [www.rsc.org.uk/education](http://www.rsc.org.uk/education)



## WATERSIDE SPACE

Our new Education and Events venue offers an ideal base for school visits, public and local community events. Situated in Stratford-upon-Avon town centre and five minutes walk from The Courtyard Theatre, it has three workshop spaces, enabling us to offer an increased programme of activities which responds to the needs of teachers, students and participants of all ages.

Generously supported by Stratford-upon-Avon Town Trust

## WE OFFER PRACTICAL WORKSHOPS, INTERACTIVE EVENTS AND ONLINE RESOURCES FOR STUDENTS AND TEACHERS,

all designed to support the relevant curriculum requirements for listening, speaking, reading, writing, literacy and drama.

- Develop your students' confidence, understanding and enjoyment of Shakespeare
- Work alongside RSC artists to increase knowledge of characters, plot, language and key themes
- Explore creative decisions specific to current RSC productions and rehearsal room practice

### WORKSHOPS

Full and half day sessions exploring current RSC productions or any Shakespeare text of your choice. Workshops are suitable for KS2–KS5 students with or without prior knowledge of the text, and are available throughout term-time. We can run three workshops simultaneously, with flexibility offered on session times. Production specific workshops are offered on the following plays, subject to availability:

- ANTONY & CLEOPATRA
- AS YOU LIKE IT
- THE COMEDY OF ERRORS
- HAMLET
- JULIUS CAESAR
- KING LEAR
- MORTE D'ARTHUR
- ROMEO & JULIET
- THE WINTER'S TALE

Available every weekday  
Full Day Workshop:  
10am–3.30pm or 1–6pm  
Cost: £320 (£305 Education Members)  
Half Day Workshop:  
10am–12noon, 1–3pm or 4–6pm  
Cost: £180 (£165 Education Members)

### THEATRE DAYS

An onstage exploration in The Courtyard Theatre of how the text has been brought to life through directorial, design and technical choices, featuring members of the Acting Company and Artistic Team.

- KING LEAR  
Thu 4 March 4–5pm
- ROMEO & JULIET  
Thu 22 April 10.30–11.30am  
Wed 19 May 4–5pm
- ANTONY & CLEOPATRA  
Mon 17 May 4–5pm  
Cost: £4 per student (£3 Education Members)

### ACTING SHAKESPEARE

Students will explore and perform aspects of the text as a company of actors, working with an RSC Assistant Director. Acting Shakespeare sessions are available on all current RSC productions during the summer term subject to availability.  
10am–3.30pm or 1pm–6pm  
Cost: £320 per workshop (£305 Education Members)

### SCHOOLS INTRODUCTIONS

These interactive discussions take place prior to midweek matinees during term time and offer the perfect introduction to the world of the play, the production your students will be watching and the theatre-making process.

Sessions last 45 minutes, suitable for students aged 8–19 years  
11.45am–12.30pm  
Cost: £2 per student

### REGIONAL SCHOOLS CELEBRATION

Mon 5 & Tue 6 July  
Across England, young people in schools from our flagship project, the Learning and Performance Network, are busy creating unique short performances celebrating Shakespeare as our contemporary to be presented at The Courtyard Theatre. 2–5pm. Cost: £3 per person, free to school groups.

The Learning and Performance Network is generously supported by the Paul Hamlyn Foundation

### 6TH FORM CONFERENCES

DELIVERED IN COLLABORATION WITH THE SHAKESPEARE BIRTHPLACE TRUST

### KING LEAR

Thu 4 March  
Designed for direct application to A Level (and BTEC) English and Theatre Studies students, this conference includes:

- Practical workshops featuring the production's Artistic Team
- Ticket to evening performance of *King Lear* and the Theatre Day event
- An exploration of the play's performance history  
10.30am–5pm. Cost: £30 per student (£25 Education Members)

### INFLUENTIAL PRACTITIONERS: PETER BROOK

Tues 27 April  
Designed for direct application to AQA Unit 2 Drama 2, 'Presentation of an extract from a play' this unique opportunity for students includes:

- A Seminar on Peter Brook's working practice with reference to seminal RSC productions
- A practical workshop exploring Brook's rehearsal techniques.
- An opportunity to view rarely seen archive materials  
10.30am–4pm. Cost: £18 per student (£13 Education Members)

### EXPLORING SHAKESPEARE

Visit [www.rsc.org.uk/explore](http://www.rsc.org.uk/explore) for free multi-media resources from past and present productions.

Generously supported by The Polonsky Foundation

### TEACHERS' COURSES

Our range of one day INSET courses offer Primary, Secondary and Special Education teachers skills, strategies and ideas to get young people on their feet and exploring Shakespeare in the classroom in the same way as our actors in the rehearsal room. Visit [www.rsc.org.uk/education](http://www.rsc.org.uk/education) for more information.

A range of courses take place in Stratford-upon-Avon and London, or at a venue of your choice. For more information about this 'outreach' option please call Sheila O'Sullivan on 01789 403462 or email [education@rsc.org.uk](mailto:education@rsc.org.uk)

### ARTS AWARD WELCOME

The RSC has become an Arts Award Welcome Centre in recognition of the many activities we offer that can help students to achieve their Arts Award.



For more information visit [www.rsc.org.uk/education](http://www.rsc.org.uk/education)

### RSC SHAKESPEARE TOOLKIT FOR TEACHERS

This new resource for Primary and Secondary English/Drama teachers offers practical classroom activities for KS2 and KS3 pupils. Includes schemes of work for three of Shakespeare's most popular plays: *Romeo and Juliet*, *Macbeth* and *A Midsummer Night's Dream*. To pre-order your discounted copy, please visit [www.rsc.org.uk/shoponline](http://www.rsc.org.uk/shoponline) (available from January 2010).

### EDUCATION MEMBERSHIP

Become an RSC Education Member and enjoy discounts on all education activities, priority booking periods, school tickets for £12 instead of £15. See page 12.

# EVENTS

**GET INVOLVED** Work with RSC practitioners, actors and directors in a range of practical workshops that allow you to delve deeper into the RSC's work onstage.

## FAMILY EVENTS

### STORYTELLING

Interactive storytelling sessions for children and their parents/carers.

Waterside Space, £2 per adult, £1 per child.

Under 5 years 9.15–10am

5–9 years 10.30–11.30am

**KING LEAR** Sat 6 March

**ROMEO & JULIET** Sat 27 March

**ANTONY & CLEOPATRA** Sat 8 May

**MORTE D'ARTHUR** Sat 26 June

**THE WINTER'S TALE** Sat 17 July

**AS YOU LIKE IT** Sat 24 July

### FAMILY DAY

Join members of the Acting Ensemble and the Creative Team to explore the story of the play and the theatre making process, including an opportunity to take part.

The Courtyard Theatre, 10–11am

£4 per adult, £2 per child plus matinee ticket.

**ROMEO & JULIET** Sat 29 May

### FAMILY WORKSHOPS

A practical workshop for children, young people and their parents/ carers that looks at Shakespeare's characters, themes and language in a fun and informative way.

Waterside Space, 10–11.30am

£4 per adult, £2 per child.

Suitable for ages 9 years up

**ROMEO & JULIET** Sat 27 March

**THE WINTER'S TALE** Sat 17 July

**AS YOU LIKE IT** Sat 24 July

Generously supported by  
The RSC Friends

## NON-PROFESSIONAL GROUPS

### MAKING SHAKESPEARE

Making Shakespeare is a series of practical workshops for members of non-professional and community theatre groups. The sessions offer participants the opportunity to share and develop acting, performance, directing and devising skills with RSC practitioners. All sessions are at Waterside Space

### MAKING SHAKESPEARE SKILLS WEEKEND

Sat 20–Sun 21 March

A theatre skills weekend of workshops including Voice, Working with Text and Movement.

10am–5.30pm

£60 (lunches & accommodation not included)

For ages 16–25 years

### MAKING SHAKESPEARE PRACTICAL WEEKEND

Sat 1–Sun 2 May

Watch the Young People's Shakespeare performance of *Hamlet* and then explore the processes of editing, directing and performing Shakespeare in a series of practical workshops and talks.

10am–5.30pm

£80 including YPS ticket (lunches & accommodation not included).

Suitable for ages 21 years up

### MAKING SHAKESPEARE WEEK

Mon 23–Fri 27 Aug

A week of practical workshops and talks looking at how the RSC works towards the performances on stage, from costume to casting, producing to performance.

10am–3.30pm

£120 (lunches & accommodation not included)

Suitable for ages 18 years up

### THE DELL

Saturdays and Sundays, June to August

Our open air stage is available for community groups, drama schools, colleges and universities from around the country to perform free theatre performances inspired by Shakespeare and English Folklore. If you would like more information about performing in The Dell email [thedell@rsc.org.uk](mailto:thedell@rsc.org.uk)



For details of additional events programmed in 2010,  
see [www.rsc.org.uk/events](http://www.rsc.org.uk/events)



## SHAKESPEARE'S BIRTHDAY CELEBRATIONS

Sat 24–Sun 25 April

As part of Stratford-upon-Avon's annual celebration of Shakespeare's Birthday, the RSC will be presenting readings, workshops, installations and events around the town.

## EXPLORE THE PLAYS

Find out more about the productions with this season's series of talks, debates and demonstrations from the creative teams, actors, practitioners and experts.

### DIRECTOR TALKS

The Director in conversation, discussing the creative choices made in the production. The Courtyard Theatre, 5.15–6pm, £5  
**KING LEAR** Mon 1 March  
**ROMEO & JULIET** Wed 17 March  
**ANTONY & CLEOPATRA** Mon 19 April  
**MORTE D'ARTHUR** Wed 16 June

### UNWRAPPED

Join members of the Creative Team and Acting Ensemble as they demonstrate some of the skills that go into making the production. The Courtyard Theatre, 10–11am £5  
Suitable for ages 12 years up.

**ANTONY & CLEOPATRA** Sat 22 May

**KING LEAR** Sat 19 June

**ROMEO & JULIET** Sat 3 July

**MORTE D'ARTHUR** Sat 10 July

### POST SHOW TALK BACKS

Stay on after the show and put your questions about the production to members of the Acting Ensemble, FREE

**KING LEAR** Thu 1 April

**ROMEO & JULIET** Thu 13 May

**ANTONY & CLEOPATRA** Thu 27 May

**MORTE D'ARTHUR** Sat 26 June

### RSC SUMMER SCHOOL

Sun 15–Fri 20 Aug

A series of lectures and talks from academics, experts and creative teams that aims to enhance participants' understanding of Shakespeare's texts and their performance. In partnership with The Shakespeare Institute.

£150 per person

See [www.rsc.org.uk/summerschool](http://www.rsc.org.uk/summerschool) or

call 01789 272289 for more information.

## EXPLORING ARTHUR

A weekend of events to accompany this season's production of *Morte d'Arthur*. Programme includes:

### SUNDAY BRUNCH – AUTHORIZING ARTHUR

Join a round table discussion, with speakers including Mike Poulton looking at how the tales of King Arthur have been interpreted and reinvented through the ages by artists and writers.

The Courtyard Theatre Sun 27 June

Brunch served from 11.30am. Debate 1–2pm

£15 including Brunch

Further Exploring Arthur event details coming soon,  
see [www.rsc.org.uk/events](http://www.rsc.org.uk/events)

# TICKET PRICES

## THE COURTYARD THEATRE

	A	B	C	D	
<b>REDUCED PRICE PREVIEWS</b>					
STALLS	£25	£20	£15	£10*	
CIRCLE	£25	£20	£15	£10*	
GALLERY	£20	£15	£10	£10*	£8
<b>MONDAY TO FRIDAY EVENINGS AND ALL MATINEES</b>					
STALLS	£33	£29	£23	£16*	
CIRCLE	£33	£29	£23	£16*	
GALLERY	£29	£23	£16	£16*	£12
<b>SATURDAY EVENINGS</b>					
STALLS	£45	£35	£27	£21*	
CIRCLE	£45	£35	£27	£21*	
GALLERY	£35	£27	£21	£21*	£15

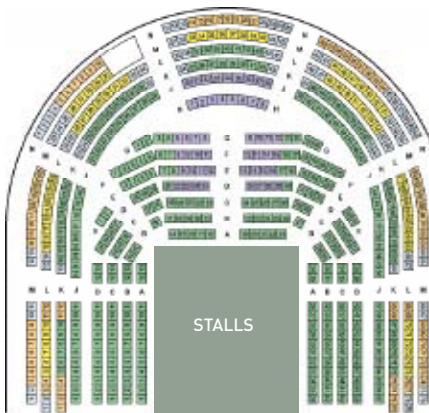
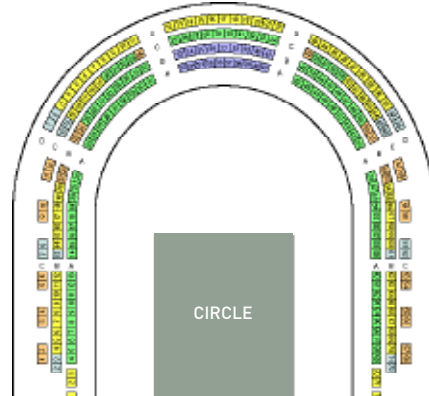
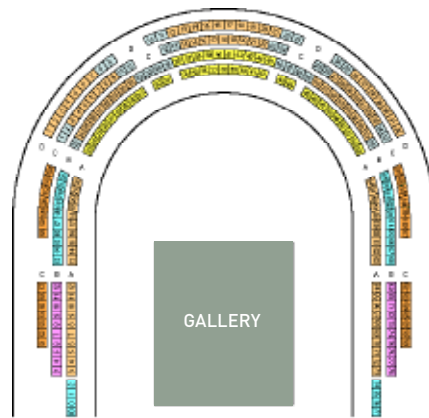
**HAMLET AND THE COMEDY OF ERRORS**  
 AGES 25 AND UNDER £5  
 AGES 26 AND OVER £10

**UNDERSTUDY PERFORMANCES**  
 NON-MEMBERS £5  
 MEMBERS £2.50

\* View from this seat may be restricted at certain times during the performance. £5 standing tickets are available in the Gallery.

Superseats are available in the Stalls and Circle at a supplement of £10 per ticket.



















Seats in the back row of the Stalls are sold at price bands B and C as they are high chairs and slightly narrower than other seating in the Stalls.



Legend: Superseat (purple), A price (green), B price (yellow), C price (orange), D price (blue)

For a more detailed plan visit [www.rsc.org.uk](http://www.rsc.org.uk)

# TICKET DISCOUNTS

<b>16-25 YEAR OLDS</b>	£5 per ticket	  
50 tickets will be reserved for every performance (except Press Night). 40 of these can be booked in advance and 10 will be sold on the day from The Courtyard Theatre Box Office. This offer is for individuals aged 16-25 who must make the booking themselves. All tickets, including those booked in advance, can only be collected from the Box Office from 1 hour before the performance. Proof of age will be required. Tickets will be allocated entirely at the discretion of the Box Office. <a href="http://www.rsc.org.uk/16-25">www.rsc.org.uk/16-25</a>		
<b>FAMILIES</b>	Up to 4 under 18s half price	  
Monday - Friday evening performances and all matinees. Does not apply to groups.		
<b>OVER 60S</b>	£23 per ticket	  
Applies to midweek matinees, Tuesday and Wednesday evenings. Individuals only (up to a maximum of 7 tickets per transaction).		
<b>SCHOOLS AND COLLEGE GROUPS</b>	£15 per ticket (£12 per ticket for RSC Education Members) plus 1 free ticket for each teacher accompanying every 10 students	 
Monday - Thursday performances for groups of 10 or more students. 1 adult is required for every 10 students. Adult free tickets will be placed amongst groups of students. This rate is only available during UK term time.		
<b>ADULT GROUPS 8+</b>	£5 off (£7 off for RSC Group Members) Superseats & top price seats Plus 1 half price ticket for group organiser	 
Monday - Friday performances for adult groups of 8+ tickets.		
<b>STANDBY RATE</b>	£15 for best available seats	 
Available on the day of the performance only. Applicable to students in full time education, under 25s, over 60s, ES40s, NCA Members, Equity and BECTU Members. Proof of entitlement will be required.		
<b>PEOPLE WITH DISABILITIES</b>	£15 per ticket	  
If your choice of seat is limited by your disability then your seat is £15. Should you need the service of a companion (including wheelchair users) their ticket is also £15.		

**TICKET KIOSK** You can now collect your tickets from our automated ticket kiosk in The Courtyard Theatre.

<b>16-25 YEAR OLDS</b>	<b>A Night Less Ordinary</b>	  
<b>A Night Less Ordinary</b> is an Arts Council England scheme in association with Metro, providing free theatre tickets to Under 26s in more than 200 venues across England. The RSC is taking part in <b>A Night Less Ordinary</b> by offering its 50 tickets for 16-25 year olds <b>for free</b> every Tuesday until February 2011. For more information visit <a href="http://www.rsc.org.uk/16-25">www.rsc.org.uk/16-25</a> To claim a free ticket either call the Ticket Hotline on <b>0844 800 1114</b> or book online using the <b>promotion code 1625</b> . Terms and conditions apply.		

All discounts are subject to availability and at the discretion of the Box Office. Discounted tickets cannot be booked in conjunction with any other discount or offer. Discounts do not apply to Superseats with the exception of People with Disabilities and Adult Groups 8+. Discounts do not apply to Young People's Shakespeare however school and college groups are entitled to 1 free teacher ticket for every 10 students tickets purchased.

 **AVAILABLE ONLINE**  **AVAILABLE BY TELEPHONE**  **AVAILABLE IN PERSON**

**SELECT YOUR OWN SEAT ONLINE**  
[www.rsc.org.uk](http://www.rsc.org.uk)  
 (no booking fee)

**RSC TICKET HOTLINE**  
**0844 800 1110**  
 (no booking fee, calls cost 5p per minute from a BT landline)

**IN PERSON**  
 Tickets can be purchased in person from The Courtyard Theatre Box Office. Open 9.30am-8pm, Monday to Saturday (opens 10am on Tuesday). The Box Office closes at 6pm when there is no performance.

**BY POST**  
 Box Office, Royal Shakespeare Company  
 The Courtyard Theatre  
 Southern Lane, Stratford-upon-Avon  
 Warwickshire, CV37 6BB

# PERFORMANCE SCHEDULE

## Abbreviations

**LEAR** = King Lear  
**ROMEO** = Romeo & Juliet  
**ANTONY** = Antony & Cleopatra  
**D'ARTHUR** = Morte D'Arthur  
**WINTER'S** = The Winter's Tale  
**AS YOU** = As You Like It  
**CAESAR** = Julius Caesar  
**HAMLET YPS** = Hamlet  
**COMEDY YPS** = The Comedy of Errors

## Key

F = First Performance  
P = Press Night  
AM = Morning Performance  
M = Matinee  
PUP = Public Understudy Performance  
L = Last Performance  
SBP = Shakespeare's Birthday Performance  
■ = Audio-Described Performance  
● = Captioned Performance  
▲ = Signed Performance  
☺ = Pre-performance, Post-performance or Special Event on stage [see www.rsc.org.uk/events]  
☐ = Reduced Price Preview  
▨ = Shakespeare Special train [see page 14]

## FEBRUARY

MON 15	NO PERF
TUE 16	NO PERF
WED 17	NO PERF
THU 18	<b>LEAR</b> 7.15 F
FRI 19	<b>LEAR</b> 7.15
SAT 20	<b>LEAR</b> 7.15
MON 22	<b>LEAR</b> 7.15
TUE 23	<b>LEAR</b> 7.15
WED 24	<b>LEAR</b> 7.15
THU 25	<b>LEAR</b> 7.15
FRI 26	<b>LEAR</b> 7.15
SAT 27	<b>LEAR</b> 7.15

## MARCH

MON 1	<b>LEAR</b> 7.15 ☺
TUE 2	<b>LEAR</b> 7.00 P
WED 3	<b>LEAR</b> 7.15
THU 4	<b>LEAR</b> 7.15
FRI 5	<b>LEAR</b> 7.15
SAT 6	<b>LEAR</b> 7.15
MON 8	NO PERF
TUE 9	NO PERF
WED 10	NO PERF
THU 11	NO PERF
FRI 12	<b>ROMEO</b> 7.15 F
SAT 13	<b>ROMEO</b> 7.15
MON 15	<b>ROMEO</b> 7.15
TUE 16	<b>ROMEO</b> 7.15
WED 17	<b>ROMEO</b> 7.15 ☺
THU 18	<b>ROMEO</b> 7.00 P
FRI 19	<b>ROMEO</b> 7.15
SAT 20	<b>ROMEO</b> 1.00 M
MON 22	<b>LEAR</b> 7.15
TUE 23	<b>ROMEO</b> 7.15
WED 24	<b>LEAR</b> 7.15
THU 25	<b>ROMEO</b> 7.15
FRI 26	<b>ROMEO</b> 7.15
SAT 27	<b>ROMEO</b> 1.00 M
MON 29	<b>ROMEO</b> 7.15
TUE 30	<b>ROMEO</b> 1.00 MPUP
WED 31	<b>LEAR</b> 7.15

## APRIL

THU 1	<b>LEAR</b> 7.15 ☺
FRI 2	<b>ROMEO</b> 7.15
SAT 3	<b>ROMEO</b> 1.00 M
MON 5	NO PERF
TUE 6	NO PERF

## APRIL

WED 7	NO PERF
THU 8	NO PERF
FRI 9	NO PERF
SAT 10	<b>ANTONY</b> 7.15 F
MON 12	<b>ANTONY</b> 7.15
TUE 13	<b>ANTONY</b> 7.15
WED 14	<b>ANTONY</b> 7.15
THU 15	<b>ANTONY</b> 7.15
FRI 16	<b>ANTONY</b> 7.15
SAT 17	<b>ANTONY</b> 1.00 M
MON 19	<b>ANTONY</b> 7.15 ☺
TUE 20	<b>ANTONY</b> 7.00 P
WED 21	<b>ROMEO</b> 7.15
THU 22	<b>ROMEO</b> 1.00 M
FRI 23	<b>LEAR</b> 7.15
SAT 24	<b>LEAR</b> 1.00 M
MON 26	<b>ROMEO</b> 7.15
TUE 27	<b>LEAR</b> 7.15
WED 28	<b>LEAR</b> 7.15
THU 29	<b>ROMEO</b> 1.00 M
FRI 30	<b>ROMEO</b> 7.15 ●

## MAY

SAT 1	<b>HAMLET YPS</b> 10.30 AM
MON 3	<b>ROMEO</b> 7.15
TUE 4	<b>LEAR</b> 1.00 MPUP
WED 5	<b>ROMEO</b> 7.15
THU 6	<b>ANTONY</b> 7.15
FRI 7	<b>ROMEO</b> 7.15
SAT 8	<b>ANTONY</b> 1.00 M
MON 10	<b>ANTONY</b> 7.15
TUE 11	<b>ANTONY</b> 7.15 ●
WED 12	<b>ROMEO</b> 7.15
THU 13	<b>LEAR</b> 1.00 M
FRI 14	<b>ANTONY</b> 7.15
SAT 15	<b>ROMEO</b> 1.00 M
MON 17	<b>ANTONY</b> 7.15
TUE 18	<b>ANTONY</b> 1.00 MPUP
WED 19	<b>ROMEO</b> 7.15

## MAY

THU 20	<b>LEAR</b> 7.15
FRI 21	<b>ANTONY</b> 7.15
SAT 22	<b>ANTONY</b> 1.00 M☺
MON 24	<b>LEAR</b> 7.15
TUE 25	<b>LEAR</b> 7.15
WED 26	<b>ROMEO</b> 7.15
THU 27	<b>ANTONY</b> 1.00 M
FRI 28	<b>ROMEO</b> 7.15 ■
SAT 29	<b>ROMEO</b> 1.00 M☺
MON 31	<b>ROMEO</b> 7.15

## MAY

THU 20	<b>LEAR</b> 7.15
FRI 21	<b>ANTONY</b> 7.15
SAT 22	<b>ANTONY</b> 1.00 M☺
MON 24	<b>LEAR</b> 7.15
TUE 25	<b>LEAR</b> 7.15
WED 26	<b>ROMEO</b> 7.15
THU 27	<b>ANTONY</b> 1.00 M
FRI 28	<b>ROMEO</b> 7.15 ■
SAT 29	<b>ROMEO</b> 1.00 M☺
MON 31	<b>ROMEO</b> 7.15

## JUNE

TUE 1	<b>ROMEO</b> 7.15
WED 2	<b>ANTONY</b> 7.15
THU 3	<b>ANTONY</b> 1.00 M
FRI 4	<b>LEAR</b> 7.15 ●
SAT 5	<b>LEAR</b> 1.00 M■
MON 7	NO PERF
TUE 8	NO PERF
WED 9	NO PERF
THU 10	NO PERF
FRI 11	<b>D'ARTHUR</b> 7.15 F
SAT 12	<b>D'ARTHUR</b> 7.15
MON 14	<b>D'ARTHUR</b> 7.15
TUE 15	<b>D'ARTHUR</b> 7.15
WED 16	<b>D'ARTHUR</b> 7.15 ☺
THU 17	<b>D'ARTHUR</b> 7.00 P
FRI 18	<b>LEAR</b> 7.15
SAT 19	<b>LEAR</b> 1.00 M☺■
MON 21	<b>ANTONY</b> 7.15
TUE 22	<b>D'ARTHUR</b> 7.15
WED 23	<b>ANTONY</b> 7.15
THU 24	<b>D'ARTHUR</b> 1.00 M
FRI 25	<b>ANTONY</b> 7.15
SAT 26	<b>ANTONY</b> 1.00 M■
MON 28	<b>D'ARTHUR</b> 7.15
TUE 29	<b>D'ARTHUR</b> 7.15
WED 30	<b>LEAR</b> 7.15

## JUNE

TUE 2	<b>ROMEO</b> 7.15
WED 2	<b>ANTONY</b> 7.15
THU 3	<b>ANTONY</b> 1.00 M
FRI 4	<b>LEAR</b> 7.15 ●
SAT 5	<b>LEAR</b> 1.00 M■
MON 7	NO PERF
TUE 8	NO PERF
WED 9	NO PERF
THU 10	NO PERF
FRI 11	<b>D'ARTHUR</b> 7.15 F
SAT 12	<b>D'ARTHUR</b> 7.15
MON 14	<b>D'ARTHUR</b> 7.15
TUE 15	<b>D'ARTHUR</b> 7.15
WED 16	<b>D'ARTHUR</b> 7.15 ☺
THU 17	<b>D'ARTHUR</b> 7.00 P
FRI 18	<b>LEAR</b> 7.15
SAT 19	<b>LEAR</b> 1.00 M☺■
MON 21	<b>ANTONY</b> 7.15
TUE 22	<b>D'ARTHUR</b> 7.15
WED 23	<b>ANTONY</b> 7.15
THU 24	<b>D'ARTHUR</b> 1.00 M
FRI 25	<b>ANTONY</b> 7.15
SAT 26	<b>ANTONY</b> 1.00 M■
MON 28	<b>D'ARTHUR</b> 7.15
TUE 29	<b>D'ARTHUR</b> 7.15
WED 30	<b>LEAR</b> 7.15

## JULY

THU 1	<b>LEAR</b> 1.00 M
FRI 2	<b>ANTONY</b> 7.15
SAT 3	<b>ROMEO</b> 7.15
MON 5	<b>LEAR</b> 7.15
TUE 6	<b>LEAR</b> 7.15
WED 7	<b>D'ARTHUR</b> 7.15
THU 8	<b>ROMEO</b> 7.15
FRI 9	<b>D'ARTHUR</b> 7.15 ■
SAT 10	<b>D'ARTHUR</b> 1.00 M☺●
MON 12	NO PERF
TUE 13	NO PERF
WED 14	<b>WINTER'S</b> 7.15
THU 15	<b>WINTER'S</b> 7.15
FRI 16	<b>WINTER'S</b> 7.15
SAT 17	<b>WINTER'S</b> 1.00 M
MON 19	NO PERF
TUE 20	NO PERF
WED 21	<b>AS YOU</b> 7.15
THU 22	<b>AS YOU</b> 7.15
FRI 23	<b>AS YOU</b> 7.15
SAT 24	<b>AS YOU</b> 1.00 M
MON 26	NO PERF
TUE 27	NO PERF
WED 28	<b>CAESAR</b> 7.15
THU 29	<b>CAESAR</b> 7.15
FRI 30	<b>CAESAR</b> 7.15
SAT 31	<b>CAESAR</b> 1.00 M●

## JULY

MON 26	NO PERF
TUE 27	NO PERF
WED 28	<b>CAESAR</b> 7.15
THU 29	<b>CAESAR</b> 7.15
FRI 30	<b>CAESAR</b> 7.15
SAT 31	<b>CAESAR</b> 1.00 M●

## AUGUST

MON 2	<b>AS YOU</b> 7.15
TUE 3	<b>AS YOU</b> 7.15
WED 4	<b>WINTER'S</b> 7.15
THU 5	<b>WINTER'S</b> 1.00 M
FRI 6	<b>CAESAR</b> 7.15
SAT 7	<b>COMEDY YPS</b> 10.30 AM
MON 9	<b>CAESAR</b> 7.15
TUE 10	<b>AS YOU</b> 7.15
WED 11	<b>AS YOU</b> 7.15 ■
THU 12	<b>AS YOU</b> 1.00 M
FRI 13	<b>WINTER'S</b> 7.15 ■

## AUGUST

MON 2	<b>AS YOU</b> 7.15
TUE 3	<b>AS YOU</b> 7.15
WED 4	<b>WINTER'S</b> 7.15
THU 5	<b>WINTER'S</b> 1.00 M
FRI 6	<b>CAESAR</b> 7.15
SAT 7	<b>COMEDY YPS</b> 10.30 AM
MON 9	<b>CAESAR</b> 7.15
TUE 10	<b>AS YOU</b> 7.15
WED 11	<b>AS YOU</b> 7.15 ■
THU 12	<b>AS YOU</b> 1.00 M
FRI 13	<b>WINTER'S</b> 7.15 ■

## AUGUST

SAT 14	<b>COMEDY YPS</b> 10.30 AM
MON 16	NO PERF
TUE 17	<b>ANTONY</b> 1.00 M
WED 18	<b>D'ARTHUR</b> 7.15
THU 19	<b>D'ARTHUR</b> 1.00 M
FRI 20	<b>LEAR</b> 7.15
SAT 21	<b>HAMLET YPS</b> 10.30 AM
MON 23	<b>LEAR</b> 7.15
TUE 24	<b>D'ARTHUR</b> 7.15
WED 25	<b>D'ARTHUR</b> 1.00 M
THU 26	<b>LEAR</b> 7.15 L
FRI 27	<b>HAMLET YPS</b> 1.00 M
SAT 28	<b>D'ARTHUR</b> 1.00 M L
MON 30	NO PERF
TUE 31	<b>AS YOU</b> 1.00 M

## AUGUST

WED 1	<b>AS YOU</b> 7.15
THU 2	<b>AS YOU</b> 1.00 M
FRI 3	<b>CAESAR</b> 7.15
SAT 4	<b>COMEDY YPS</b> 10.30 AM
MON 6	NO PERF
TUE 7	NO PERF
WED 8	<b>HAMLET YPS</b> 10.15 AM
THU 9	<b>COMEDY YPS</b> 2.00 M▲
FRI 10	<b>HAMLET YPS</b> 2.00 M
SAT 11	<b>COMEDY YPS</b> 1.00 M L

## AUGUST

WED 1	<b>AS YOU</b> 7.15
THU 2	<b>AS YOU</b> 1.00 M
FRI 3	<b>CAESAR</b> 7.15
SAT 4	<b>COMEDY YPS</b> 10.30 AM
MON 6	NO PERF
TUE 7	NO PERF
WED 8	<b>HAMLET YPS</b> 10.15 AM
THU 9	<b>COMEDY YPS</b> 2.00 M▲
FRI 10	<b>HAMLET YPS</b> 2.00 M
SAT 11	<b>COMEDY YPS</b> 1.00 M L

## SEPTEMBER

WED 1	<b>AS YOU</b> 7.15
THU 2	<b>AS YOU</b> 1.00 M
FRI 3	<b>CAESAR</b> 7.15
SAT 4	<b>COMEDY YPS</b> 10.30 AM
MON 6	NO PERF
TUE 7	NO PERF
WED 8	<b>HAMLET YPS</b> 10.15 AM
THU 9	<b>COMEDY YPS</b> 2.00 M▲
FRI 10	<b>HAMLET YPS</b> 2.00 M
SAT 11	<b>COMEDY YPS</b> 1.00 M L



The Courtyard Theatre, Stratford-upon-Avon

## SHAKESPEARE SPECIALS

Following the success of the 2009 services, we will be running a series of special late night trains in partnership with Chiltern Railways to help patrons travel home after seeing a production in Stratford-upon-Avon.

The Shakespeare Special trains will depart from Stratford-upon-Avon station at 11:20pm. Calling at Leamington Spa, Banbury, Bicester North, Haddenham and Thame Parkway and High Wycombe, the trains arrive into London Marylebone.

These trains can be used by everyone and are not just exclusive to theatregoers, but if you would like to book tickets to see a performance at The Courtyard Theatre and wish to travel home after seeing the show they may be especially useful.

The first confirmed Shakespeare Specials are on **Saturday 24 April** and **Saturday 15 May**.

Please check [www.rsc.org.uk/trains](http://www.rsc.org.uk/trains) for future dates.

For train timetables and to buy rail tickets please visit [www.chilternrailways.co.uk/rsc](http://www.chilternrailways.co.uk/rsc)



## COURTYARD THEATRE TOURS

Why not take a tour behind the scenes? Little known facts and ingenious tricks of the trade will be revealed as experienced, entertaining guides brimming with anecdotes and information lead tours through the auditorium and backstage areas. Due to the operational demands on the theatre spaces it may not be possible to see all areas on each tour. Theatre Tours are available throughout the year, depending on the performance and rehearsal schedules.

For further information, please visit [www.rsc.org.uk/theatretours](http://www.rsc.org.uk/theatretours) or telephone the Box Office on 0844 800 1114

## JOIN US AND MAKE A DIFFERENCE

With a range of options from £15 to £10,000 per year, there are many ways to engage with the RSC. Choose a level that suits you and enjoy a closer connection with us whilst also supporting our work on stage.

**E-MAIL UPDATES** Visit [www.rsc.org.uk](http://www.rsc.org.uk) for the latest RSC news and to sign up for regular email updates.

**JOIN TODAY** Annual RSC Membership costs just £15 for Associate Membership or £36 for Full Membership and provides you with regular updates on RSC news, advance information and priority booking. There are also memberships available for Schools and Group bookers.

**SUPPORT US** A charitable donation from £100 a year, can offer you the benefits of membership, whilst also allowing you the opportunity to deepen your relationship with the Company through special events, backstage tours and exclusive ticket booking services.

The options include Shakespeare's Circle (from £100 a year), Patrons' Circle (Silver: £1,000 a year, Gold: £5,000 a year) and Artists' Circle (£10,000 a year).

For more information on the benefits of each Membership level or to join online please visit [www.rsc.org.uk/joinus](http://www.rsc.org.uk/joinus)

Image credits  
Photograph of Greg Hicks for *King Lear*. Sam Troughton and Mariah Gale for *Romeo and Juliet*. Darrell D'Silva and Kathryn Hunter for *Antony and Cleopatra*. Morte D'Arthur and Dharmesh Patel for *Hamlet* by Ellie Kurtz. Production photography from *As You Like It*, *Julius Caesar* and *The Comedy of Errors* by Ellie Kurtz. Production photography from *The Winter's Tale* and Transformation images by Stewart Hemley.

Printed in November 2009  
Every effort is made to ensure that the information remains correct, however please check with the RSC Box Office for full and final details. RSC registered charity number 212481

# TRANSFORMING OUR THEATRES

## THE NEXT STAGE



IMAGE: HAYES DAVIDSON

As we complete work on the exterior of our new home in Stratford-upon-Avon, the interior of the Royal Shakespeare Theatre is taking shape. We are looking at colours, fabrics, materials and finishes for everything from our seats to our floors.

At the end of 2010 we look forward to opening the doors to our new theatre, welcoming you in to join us on the last stage of the journey and helping us to test the space through a four month opening programme of activities and events.

Over 7,000 people have already supported the Transformation from over 40 countries worldwide. We still need your help and hope you will want to play your part in our Transforming Our Theatres Appeal. To find out more visit [www.rsc.org.uk/transformation](http://www.rsc.org.uk/transformation)



Vikki Heywood  
Executive Director



Installation of the modular stage floor has begun in the auditorium stage basement.



The new roof that oversails the restaurant has been completed.



The Theatre Tower will be a new landmark for Stratford-upon-Avon, providing circulation to all levels of the theatre, as well as providing a viewing platform with views across the town and beyond.

